

All the power you need in a slimline package

Luffing-Jib Crane 190 HC-L 8/16 Litronic®

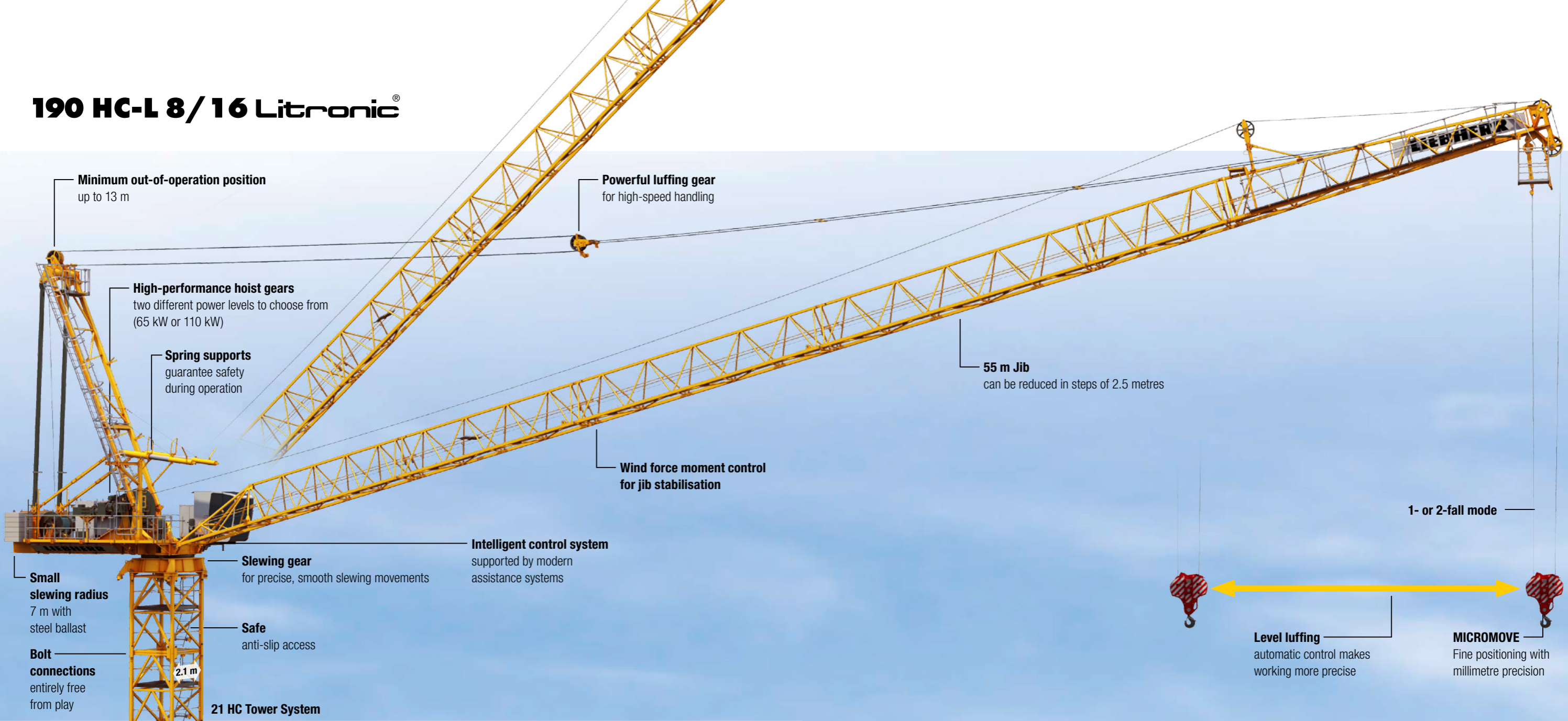
Technical Data

Max. lifting capacity	16,000 kg
Max. radius	55.0 m
Max. lifting capacity at the jib head	2,500 kg
Max. lifting height	892 m



LIEBHERR

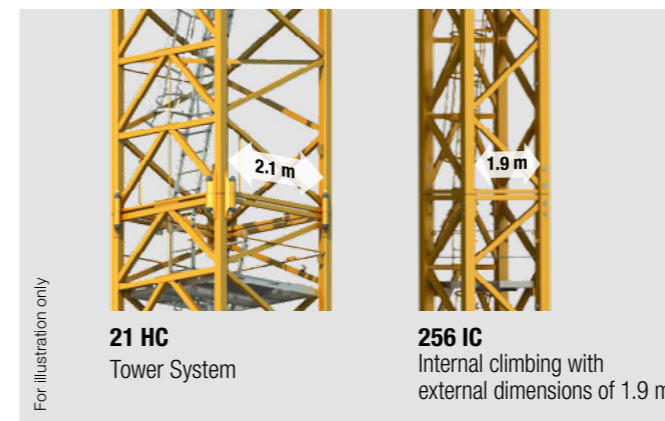
190 HC-L 8/16 Litronic®



All the power you need in a slimline package.

When purchasing a high-quality HC-L crane, a long-term use and flexible and economic concept plays a central role for which the 190 HC-L offers you a solution.

As standard, the 190 HC-L is designed for the widely used 21 HC tower system and equipped with 55 m jib and a 65 kW hoist gear – thus, you work with high speeds and have one of the most powerful cranes in its class. In addition, you benefit from the proven Liebherr quality and work with an intelligent control and modern assistance systems.



On a well-known base

The 190 HC-L is supplied with a slewing ring support for the 21 HC tower system to enable standard erection on the most widely used Liebherr tower system. Using a transition section, the crane can be mounted simply and quickly on an IC tower system so that climbing is also possible in particularly small elevator shafts.



HC-L Cranes – Compact and powerful top performer.

From the very beginning ...

- Low-cost transport:
 - with just a few trucks
 - using containerisable package units
- Low-cost assembly
 - using adjustable assembly units to suit the mobile crane
 - with quick assembly connections using the Connect & Work system

... work safely

- High handling capacity:
 - high-speed, low-maintenance high-performance driving units manufactured in-house
 - radio-control possible
 - ergonomic workplace for the crane driver
- Litronic – safety-based control system with modern assistance systems
 - ABB operating-range limiting system
 - anti-collision system (AKS interface)
 - assistance systems for jib stabilisation
 - adjustable slewing gear modes
 - Micromove fine positioning system