

LRS

# Log Handler



**LIEBHERR**

# LRS Log Handler

## Performance

The telescopic boom allows an unrivalled range of up to 8.5 metres and stacking height of up to 8.9 metres. Another advantage is the possibility of log handling below ground level. The wood grab can be rotated 360° and actively swivelled back and forth.

## Economy

The lumber handling device of the latest generation combines a modern and innovative concept with extraordinary efficiency and economy. Like all Liebherr Reachstackers, the Log Handler is also equipped with a stepless hydrostatic drive, which is characterised above all by enormous fuel savings. In addition, the Liebherr Pactronic® hybrid drive system, fitted as standard, enables a significant reduction in exhaust emissions while at the same time reducing fuel consumption.

## Reliability

Sophisticated design and proven quality standards make the Liebherr Log Handler a hallmark of reliability. Key technologies and important assemblies such as the entire drive and control technology and the diesel engine are manufactured in-house.

## Comfort

When designing the driver's cabin, particular attention was paid to ergonomic principles. The cab sets new standards in terms of ergonomics and ease of operation. The all-round glazing around the cabin and the flattened design of the device reduce the blind spot and ensure a clear view of the entire working area at all times.

## Maintainability

The design of the Log Handler is optimised for quick and easy service. All relevant parts are easily accessible, ensuring short idle times. A team of more than 600 experienced and versatile factory-trained service engineers operates in more than 50 countries around the world.



# LRS Log Handler Overview

## Flexible grapple with high output

- Extraordinary grapple capacity (8.2 m<sup>2</sup>)
- Can be rotated through 360°
- High flexibility in longitudinal and transversal direction
- Inclination up to 70° inwards possible
- Quick opening and closing

## High-performance powerpack

- Maintenance intervals (1,000 h)
- Easy servicing
- Hydrostatic drive permits infinitely variable switching
- Optimised performance thanks to Liebherr hybrid drive - Pactronic® as standard
- No wear parts required such as differential and gearbox
- Long service life
- Two independent braking systems - hydraulic (maintenance-free) and mechanic
- Short braking distances

## Single-wheel drive for drive axles

- Reduced slip
- Possible to drive within narrow radii
- Reduced transverse forces on the rear axle

## Features

- Log pusher, with replaceable slider lip
- TopView system for enhanced security (optional)
- Deep temperature package (optional)



## Boom with great flexibility

- Extensive working range
- Loading and unloading first and second track row
- Easy access for service (grapple can be lowered on to the ground)

## Spacious cabs with enhanced comfort

- Protective structure meets FOPS Level II
- Excellent visibility
- Air-suspended, ergonomic driver's seat with seat heating
- Trainer's seat available (optional)
- Safety belt available
- High-performance windshield wiper on windscreen, roof panel and rear window
- Electrically adjustable exterior mirrors (optional)
- Air-conditioning system available (optional)
- Auxiliary heating (optional)
- Radio
- Monkey-head for controlling the grapple function
- Steering wheel for controlling the Log Handler
- Ergonomic layout of operating elements and monitor

## Robust cladding

- Reliable and corrosion-resistant
- Easy service accessibility
- All relevant service components easily accessible

# Technical Data

## Dimensions

|                               |    |            |
|-------------------------------|----|------------|
| Overall length of the machine | mm | 8840       |
| Overall length incl. grapple  | mm | 12750      |
| Width incl. front wheels      | mm | 4470       |
| Min. ground clearance         | mm | 300        |
| Wheelbase                     | mm | 6500       |
| Max. boom angle               | °  | 55         |
| Boom height (min./max.)       | mm | 4980/15800 |

## Lifting capacity

|                       |    |      |
|-----------------------|----|------|
| Max. lifting capacity | t  | 30   |
| Max. lifting height   | mm | 8900 |
| Max. radius           | mm | 8500 |

## Tyres

|                         |                 |    |
|-------------------------|-----------------|----|
| Dimensions              | 18.00 x 25/PR40 |    |
| Number of tyres         | 4/2             |    |
| Tyre inflation pressure | bar             | 10 |

## Wood grapple

|                          |                |          |
|--------------------------|----------------|----------|
| Wood grab capacity       | m <sup>2</sup> | 8.2      |
| Turning angle            | °              | 360      |
| Max. inclination grapple | °              | -70/+ 85 |

## Work speeds

|  |      |      |
|--|------|------|
| Travel speed, unladen                  | km/h | 25.0 |
| Travel speed, rated load               | km/h | 20.0 |
| Max. opening period of grapple         | s    | 8.0  |
| Max. closing period of grapple         | s    | 6.0  |
| Max. rotation period of grapple (360°) | s    | 10.0 |

## Engine

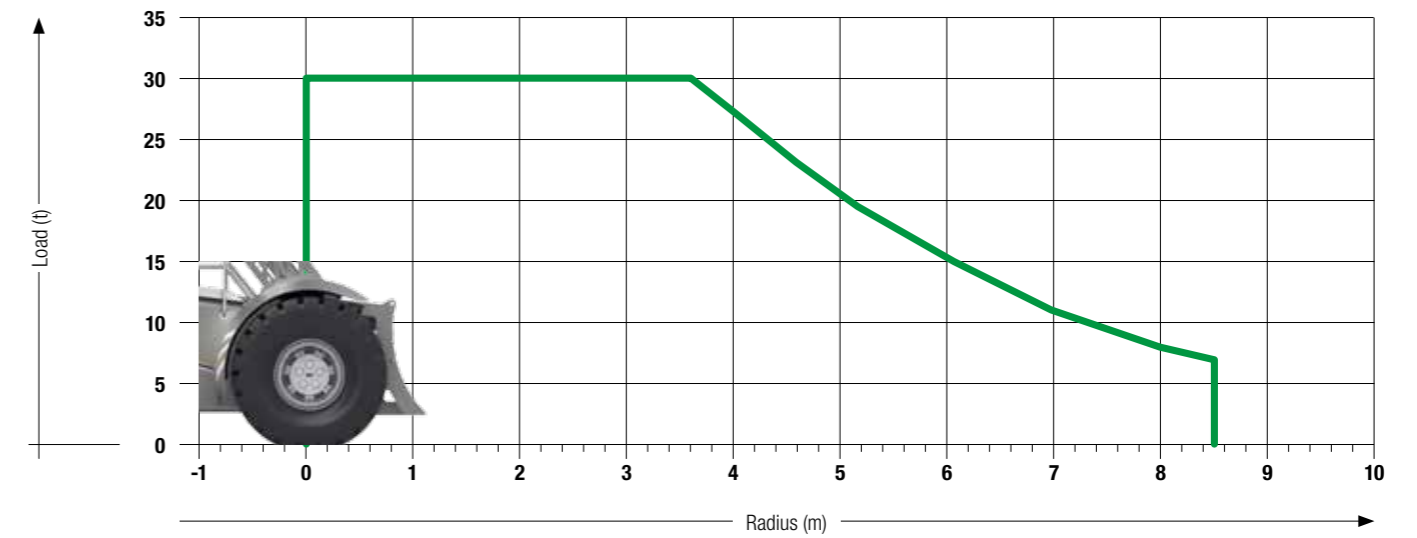
|           |               |                     |
|-----------|---------------|---------------------|
| Power     | kW/HP         | 230/312 at 1700 rpm |
| Model     | Liebherr D944 |                     |
| Fuel tank | l             | 500                 |

The diesel engine complies with the exhaust gas certification for mobile machines in accordance with EPA / CARB Tier V

## Weight

|                              |   |        |
|------------------------------|---|--------|
| Total weight (unladen/laden) | t | 80/110 |
|------------------------------|---|--------|

## Load Diagram



# The Liebherr Group of Companies



## Wide Product Range

The Liebherr Group is one of the largest construction equipment manufacturers in the world. Liebherr's high-value products and services enjoy a high reputation in many other fields. The wide range includes domestic appliances, aerospace and transportation systems, machine tools and maritime cranes.

## Exceptional Customer Benefit

Every product line provides a complete range of models in many different versions. With both their technical excellence and acknowledged quality, Liebherr products offer a maximum of customer benefits in practical applications.

## State-of-the-art Technology

To provide consistent, top quality products, Liebherr attaches great importance to each product area, its components and core technologies. Important modules and components are developed and manufactured in-house, for instance the entire drive and control technology for construction equipment.

## Worldwide and Independent

Hans Liebherr founded the Liebherr family company in 1949. Since that time, the enterprise has steadily grown to a group of more than 130 companies with over 41,000 employees located on all continents. The corporate headquarters of the Group is Liebherr-International AG in Bulle, Switzerland. The Liebherr family is the sole owner of the company.

[www.liebherr.com](http://www.liebherr.com)

## Liebherr-MCCtec Rostock GmbH

Liebherrstraße 1, D-18147 Rostock/GERMANY

Tel.: +49 381 6006 5020

[www.liebherr.com](http://www.liebherr.com), E-Mail: [reachstacker@liebherr.com](mailto:reachstacker@liebherr.com)

[www.facebook.com/LiebherrMaritime](https://www.facebook.com/LiebherrMaritime)